

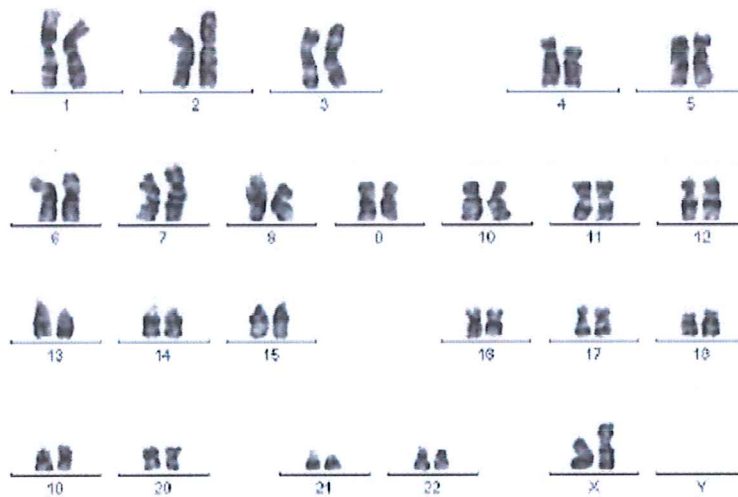
ANEXO 1

Cariotipo/bandeo G/ cAMDdh01-MiPS4F8

Caryotype/ G-banding

Trabajo realizado por el Biobanco de SSPA, centro de Granada, a partir de una muestra de células adaptadas a cultivo sin feeders.

Results provided by SSPA Biobanc of Granada, from a sample of the iPSC line adapted to grow without feeders.



Diagnóstico citogenético: Línea celular compatible con un cariotipo femenino normal.

Cytogenetic diagnostic:

Cell line compatible with a normal female karyotype.

ANEXO 2
Análisis STR

Fingerprint analysis

Trabajo realizado en el Biobanco del SSPA, centro de Granada, a partir de muestras de ADN genómico de la línea cAMDdh01-MiPS4F8 y de las células primarias (PBMCs).

Results provided by the SSPA Biobanc of Granada from genomic DNA sample from both primary cells (PBMCs) and cAMDdh01-MiPS4F8.

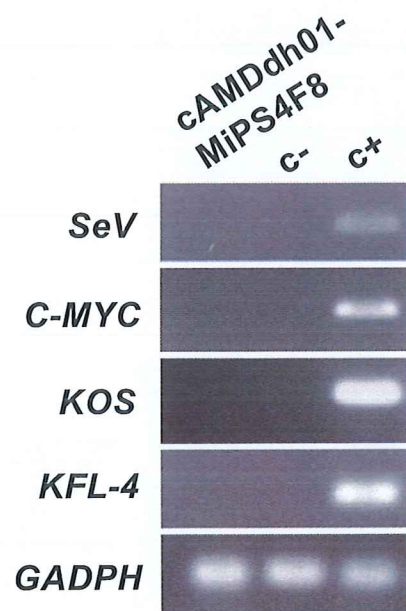
	PBMCs	cAMDdh01-MiPS4F8
AMEL	X,X	X,X
CSF1PO	8, 12	8, 12
D5S818	11, 12	11, 12
D13S317	8, 11	8, 11
D21S11	30, 31	30, 31
D16S539	9, 12	9, 12
D7S820	9, 10	9, 10
TH01	9, 9.3	9, 9.3
TPOX	10, 11	10, 11
vWA	17, 18	17, 18

ANEXO 3 Análisis silenciamiento

Viral silencing analysis

Se realiza rtPCR para detectar factores de reprogramación ectópicos y gen que codifica la cápsida del virus. c+ es cAMDdh01-MiPS4F8 en pase 1, c- es una muestra de las células primarias (PBMCs).

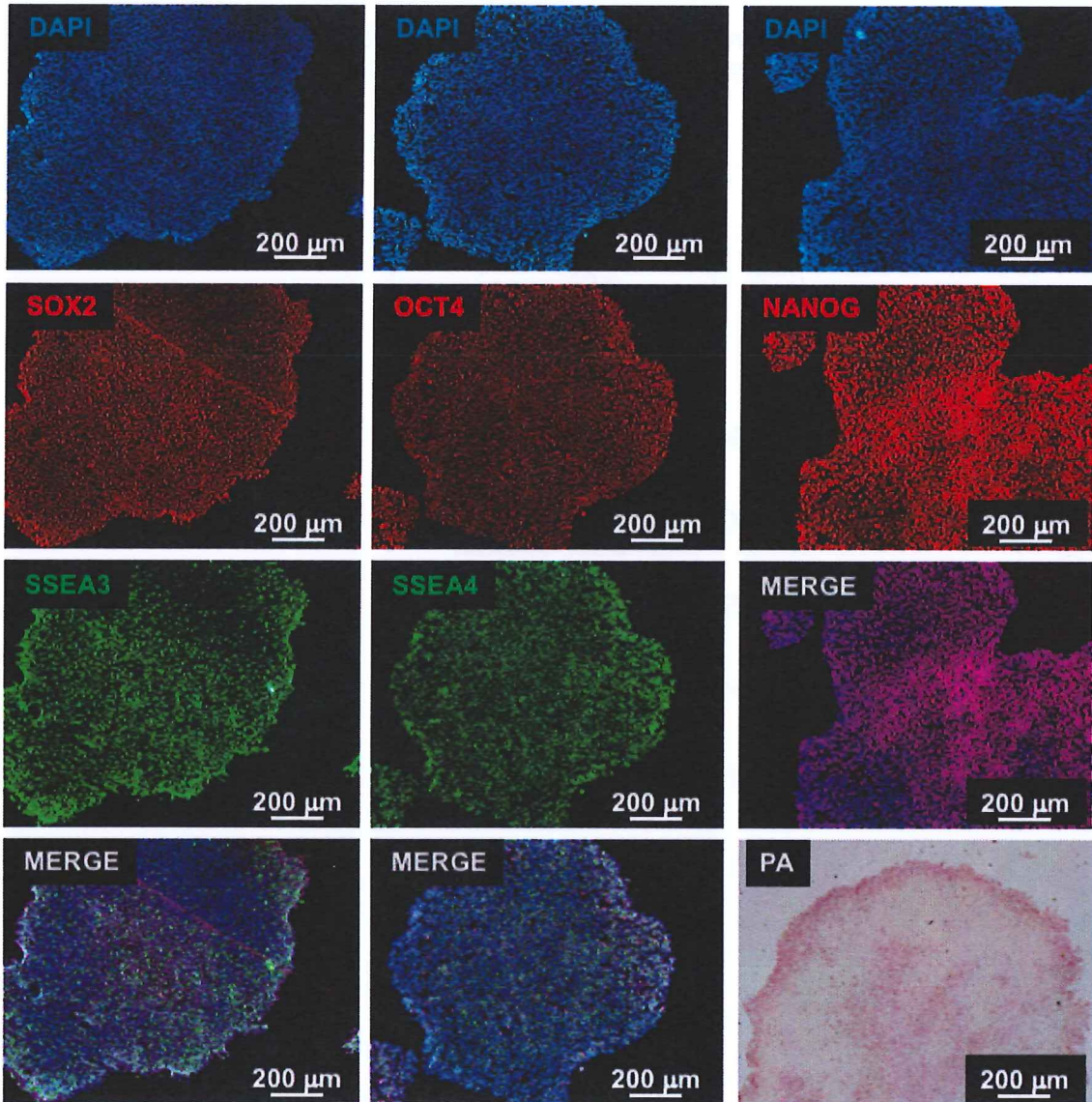
rtPCR to detect ectopic reprogramming factors and capsid gene. c+ is cAMDdh01-MiPS4F8 at passage 1 and c- is a primary cell sample (PBMCs).



ANEXO 4

Caracterización de pluripotencia por inmunofluorescencia y test fosfatasa alcalina (PA).

Pluripotency characterization, IF and alkaline phosphatase test (PA).

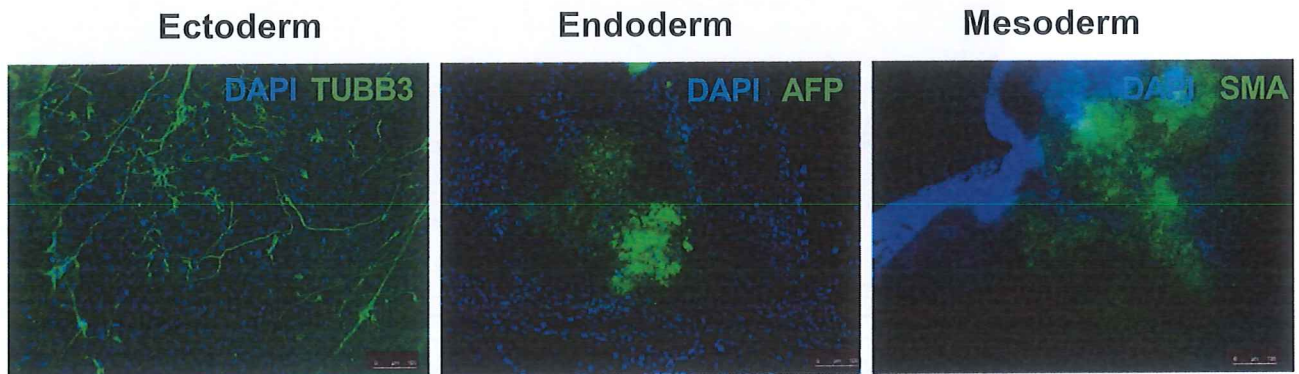


ANEXO 5

Diferenciación *in vitro*: inmunofluorescencia de marcadores de las tres capas embrionarias en cuerpos embrionarios diferenciados a partir de cAMDdh01-MiPS4F8.

AFP, alpha fetoprotein; TUBB3, neuron-specific b-tubulin; SMA, smooth muscle actin.

In vitro differentiation: IF of markers of three germ layers in embryoid bodies generated from cAMDdh01-MiPS4F8.

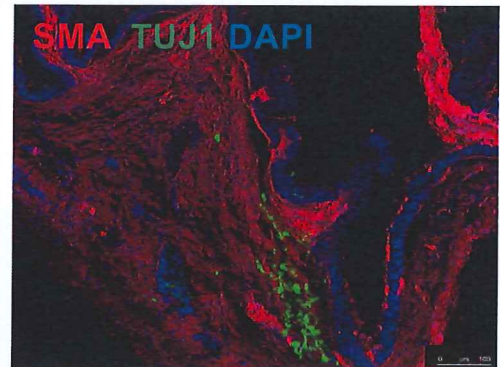
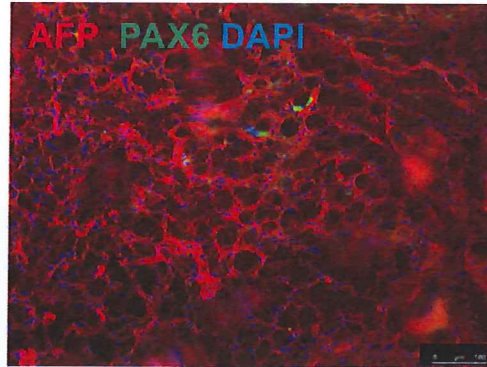


ANEXO 6: Análisis de teratoma: Inmunofluorescencia de marcadores de las tres capas embrionarias.

AFP, alpha fetoprotein; Tuj1, neuron-specific class III b-tubulin; PAX6, paired box 6; SMA, smooth muscle actin.

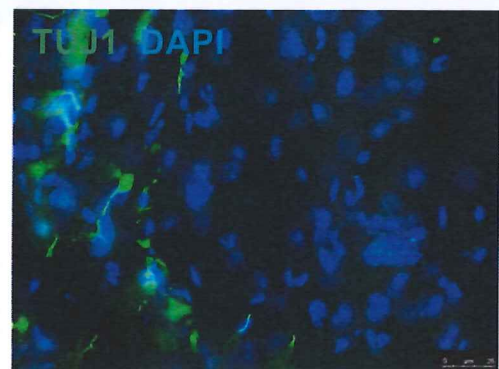
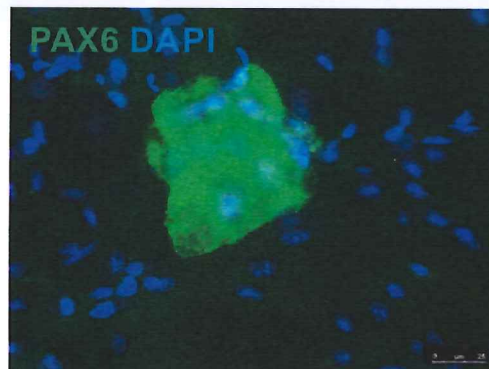
Teratome analysis: IF of one marker of each germ layer.

Low magnification images: markers of three embryonic layers



Detail images: markers of three embryonic layers

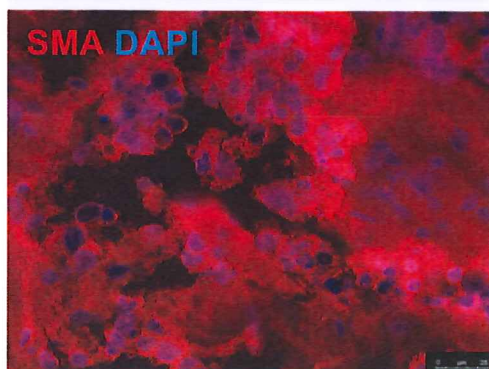
Ectoderm



Endoderm



Mesoderm



ANEXO 7

Control Mycoplasma

Mycotest realizado para varias muestras con dos controles positivos (c+1; c+2). La ausencia de amplificación de ADN a 500 pb indica ausencia de Mycoplasma en el medio de cultivo de todas las muestras analizadas, entre las que se encuentra cAMDdh01-MiPS4F8 (**s4**).

*Mycotest using PCR amplification for several iPS samples indicates absence of micoplasm contamination in the culture media of all of them, including cAMDdh01-MiPS4F8 (**s4**). c+1 and c+2 are two positive controls showing amplification at 500 bp.*

